

PAY RECON[®]

REVAMP YOUR WAREHOUSE

Strategies

**TO STREAMLINE YOUR
STORAGE AND LAYOUT**

WWW.PAYRECON.MY



"Discover the blueprint to **optimize your warehouse space** and transform your storage and layout for maximum efficiency and profitability."

TABLE OF CONTENT

CHAPTER 1

- 5 Tips to Avoid Common Warehouse Storage Errors

CHAPTER 2

- 5 Strategies to Optimize Your Warehouse Layout

PAY RECON®

CHAPTER 1

"DON'T MAKE THESE MISTAKES!"

TIPS TO AVOID COMMON WAREHOUSE STORAGE ERRORS

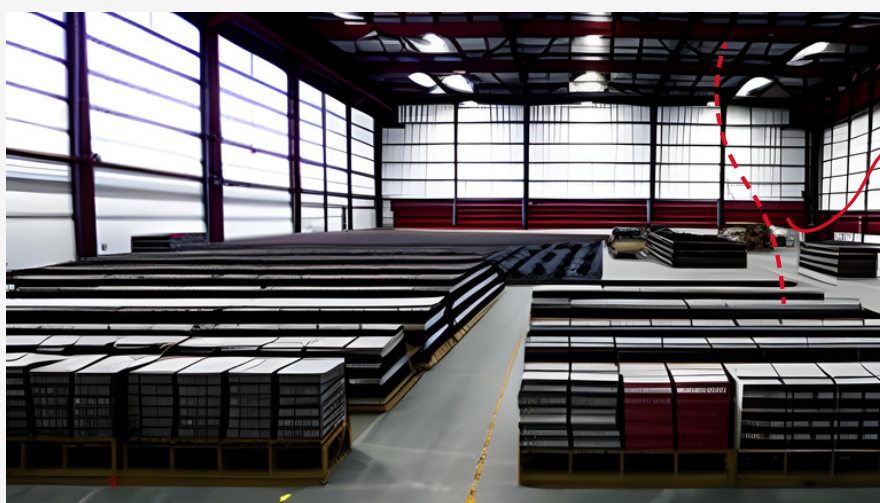


As an online seller, **optimizing your warehouse space** is crucial for running a successful business. However, there are common mistakes that many sellers make that can hurt their bottom line.

In this ebook, we'll identify the **most common mistakes in warehouse storage** and provide actionable tips on how to avoid them.

1 NOT USING VERTICAL SPACE

Not utilizing vertical space in a warehouse can lead to inefficient use of available storage capacity. This can result in wasted space, increased storage costs, and reduced productivity due to longer retrieval times.



EXTRA VERTICAL SPACE!!

Not utilizing vertical space.

2 DISORGANIZED STORAGE

Another common mistake is a disorganized storage. When you have a disorganized warehouse, it can lead to inefficient workflows, misplaced inventory, and increased lead times.

3 OVERSTOCKING

Overstocking can cause space shortages, delays, and waste. For instance, low-demand items taking up valuable space can delay the fulfillment of faster-moving products, affecting order processing.



Disorganized Storage.



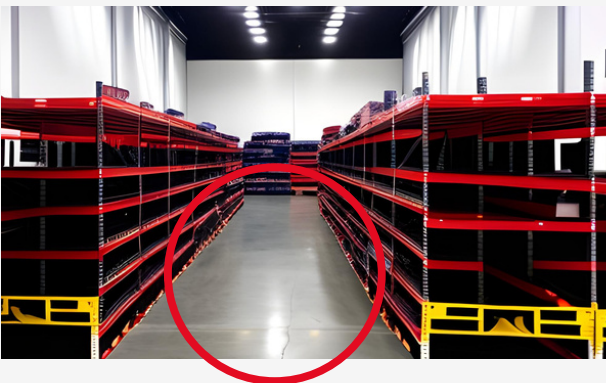
Overstocking.

4 NOT OPTIMIZING STORAGE LAYOUT

Not optimizing the storage layout in a warehouse can lead to inefficiencies in inventory management, resulting in wasted space, increased retrieval time, and reduced productivity.

5 POOR LABELING

Poor labeling in a warehouse causes confusion among employees, leading to misplaced inventory, lost time, and decreased productivity. It also impacts inventory accuracy, resulting in overstocking, understocking, or lost inventory, leading to financial losses.



Wasted space.



Difficult to read shelf label.

CHAPTER 2

"MAXIMIZE YOUR STORAGE SPACE!"

STRATEGIES TO OPTIMIZE YOUR WAREHOUSE LAYOUT



Are you struggling to optimize your warehouse storage space? Do you find yourself **running out of space and constantly reorganizing your inventory?**

In this guide, we'll share proven strategies to help you optimize your storage space and maximize your warehouse layout..

1 CONDUCT A THOROUGH INVENTORY ANALYSIS

The first step to optimizing your storage space is to understand what inventory you have and how much space it requires. Conduct a thorough inventory analysis to identify slow-moving items, high-demand items, and items that require specific storage conditions.



At PayRecon Malaysia, **we do On-site visit to customer warehouse for deployment study.**

We help you to do a comprehensive on-site study and employee training for **optimized warehouse operations.**

We do;

- Deployment study on customer warehouse layout, user role, inbound and outbound area.
- Gathering requirements from customer based on their business nature.
- Simplify entire warehouse operations using FEFO and FIFO methods.
- Provide employees with effective inbound and outbound training
- Reconfigure system workflows before launching.
- Billing system for fulfillment center



[Click to watch](#)



2 UTILIZE VERTICAL SPACE

Using vertical space in a warehouse can increase storage capacity and reduce costs. Racks, shelves, and mezzanines can expand the storage area without needing more floor space.

3 IMPLEMENT EFFICIENT STORAGE SYSTEMS

By implementing **PayRecon's WMS (Warehouse Management System)**, businesses can optimize their storage space preventing inefficient storage systems, reduce wasted space, and streamline warehouse operations.



Good use of vertical space using shelves.



Assigning hot selling items to the pick face area for efficient and speedy order fulfillment.

4

CONSOLIDATE AND REORGANIZE INVENTORY

Consolidating similar items and reorganizing your inventory can help optimize your storage space. Group similar items together, remove excess packaging, and use standard-sized containers.

5

INVEST IN AUTOMATION

PayRecon's automation solution, which includes a SMART POS system, PDA/SMART Scan App and more enhances warehouse efficiency by accurately tracking and managing inventory. With increased automation, warehouse productivity is optimized.



Ongoing inventory reorganization by ClickAsia employees.



Implementing PayRecon WMS system custom picking method via PDA.

CONCLUSION:

By following these strategies, you can optimize your warehouse storage space and improve your overall warehouse layout. With a well-organized and efficient warehouse, you can improve your operations and boost your bottom line.

Ready to optimize your warehouse storage space?
[Click here to book a Demo.](#)

